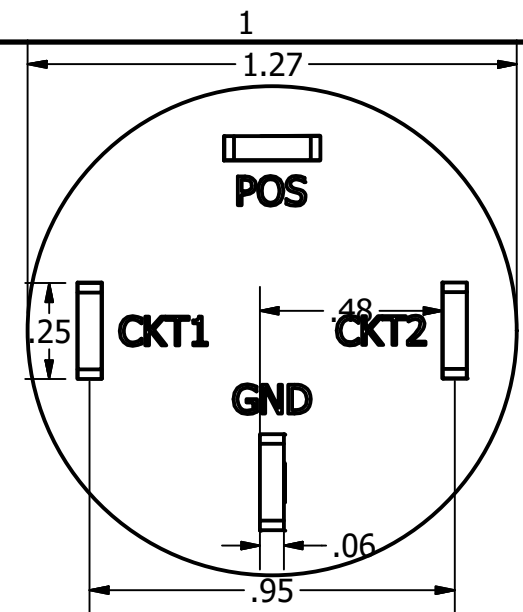
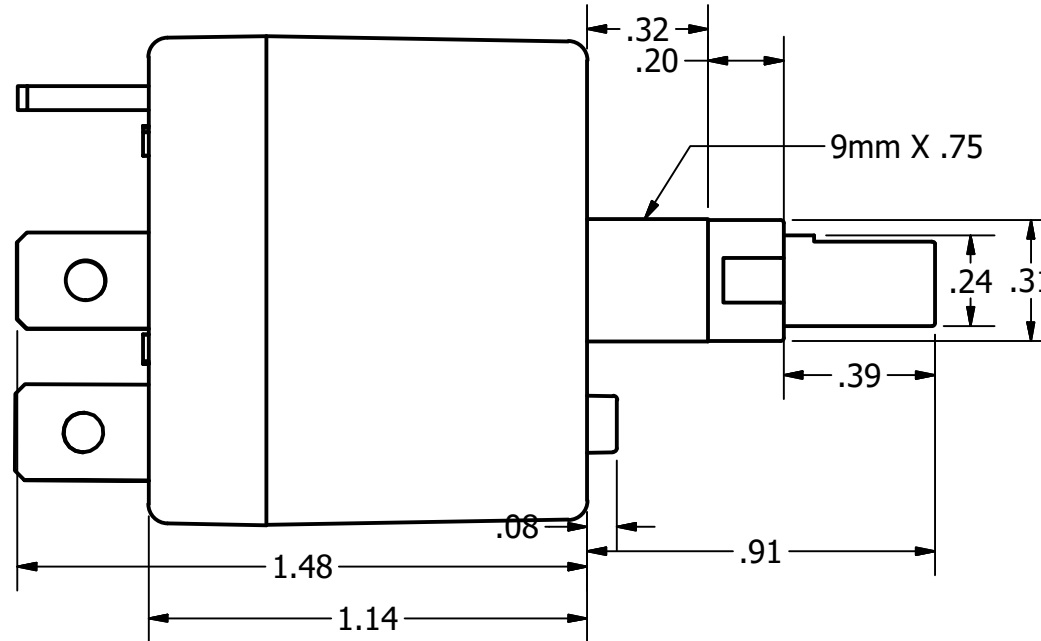
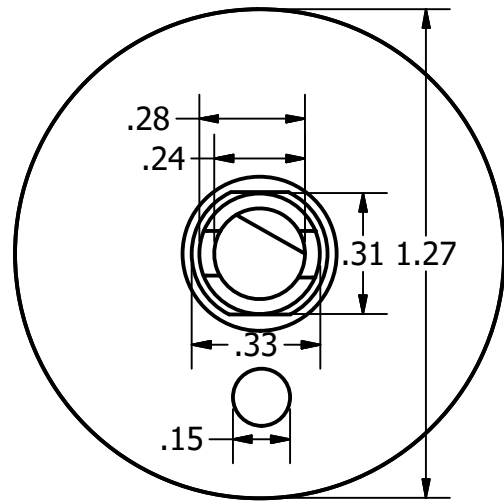
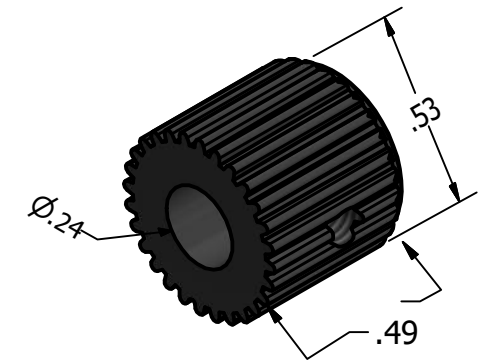
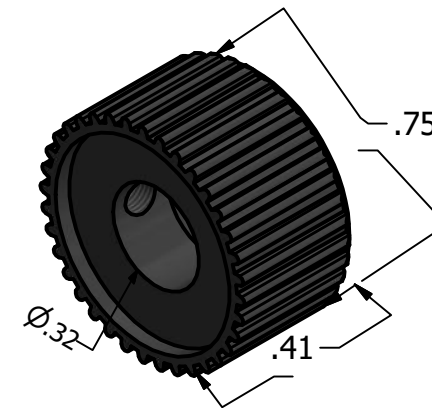
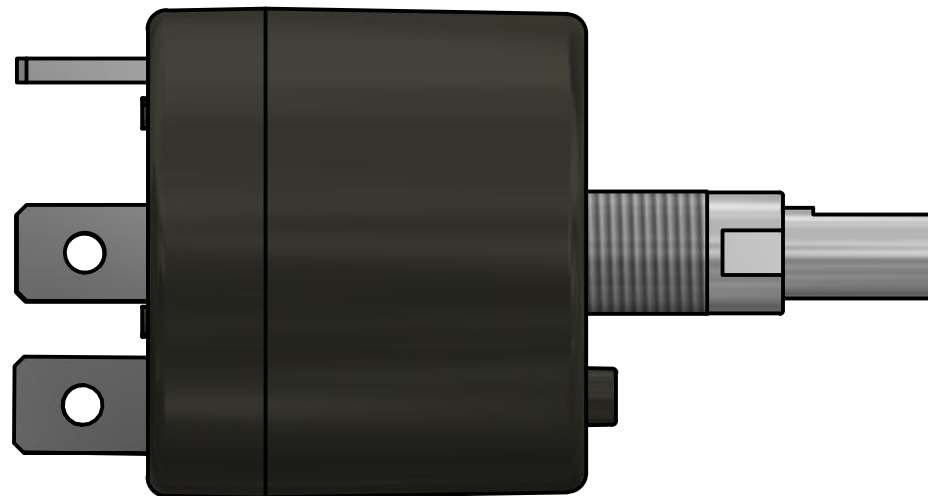


1.6" square NTS




PARTS LIST	
1	MaxDim Duo w/ring lugs
1	Installation Instructions
4	Color Coded Spade terminals
1	Optional reference panel label
	Optional placard
1	STC Printout for logs
1	Optional Installatin Template
1	Knob
4	6-32 screws, lock washer for terminals
2	Allen Wrenches
1	9mm X .75 bushing nut



SPECIFICATIONS	
STC/PMA	SA01800SE/PQ2574NM
DO-160E Testing	SEC. 21: RFE (EMI)
Voltage Range	12 to 35 VDC
Maximum Current	10 A per Channel
Output Channels	2
Internal Temp Protected	+85 degrees C
Enclosure Material	Bayer FR110 Resin meets UL94
Weight	1 ounce (28g)
Warranty	One Year Limited
Storage Temperature	-40C to +100C
Operating Temperture	-30C to +85C
Internal Temp	+25 C at 10 A

DIMENSIONAL TOLERANCES		
Fractions	Decimals inches	Angles
+/- 1/32	.XX +/- .08	+/- 1 degree
	.XXX +/- .010	
	X +/- .1	

REVISION HISTORY				
ZONE	REV	DESCRIPTION	DATE	APPROVED
All	--	Initial	3/3/2013	JB

DRAWN JB	3/1/2013	 Seaton Engineering	
CHECKED JC	3/1/2013		
QA			
MFG JB	3/2/2013	MaxDim Duo Dual Channel Dimmer	
APPROVED JB	3/2/2013		
SIZE B		DWG NO 9100-001-D	REV --
SCALE 2 : 1		SHEET 1 OF 1	